



Leaders in Safety

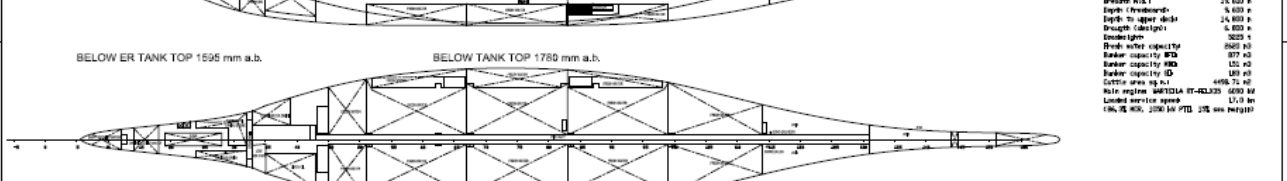
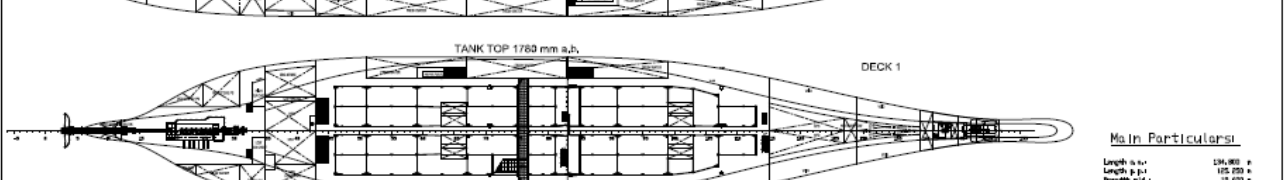
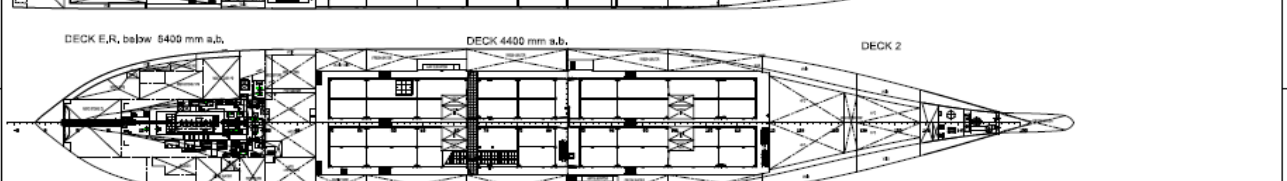
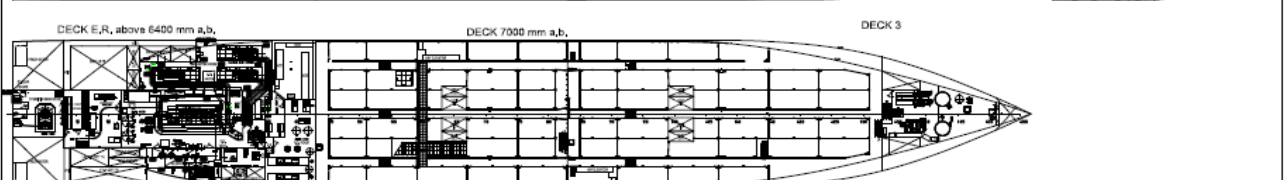
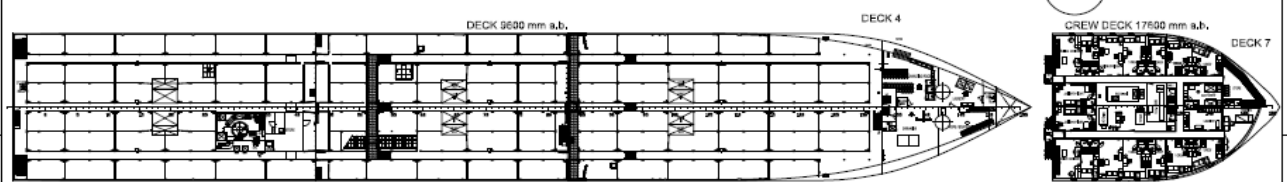
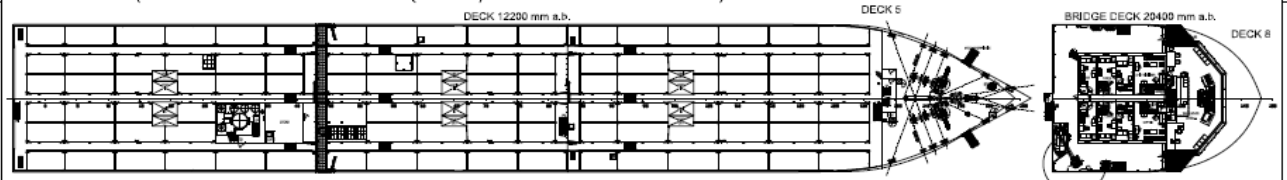
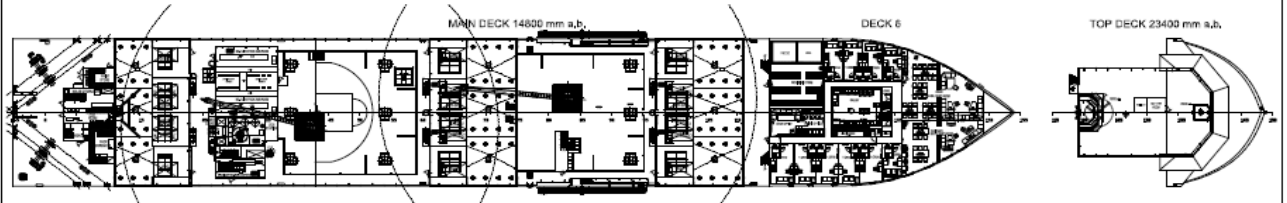
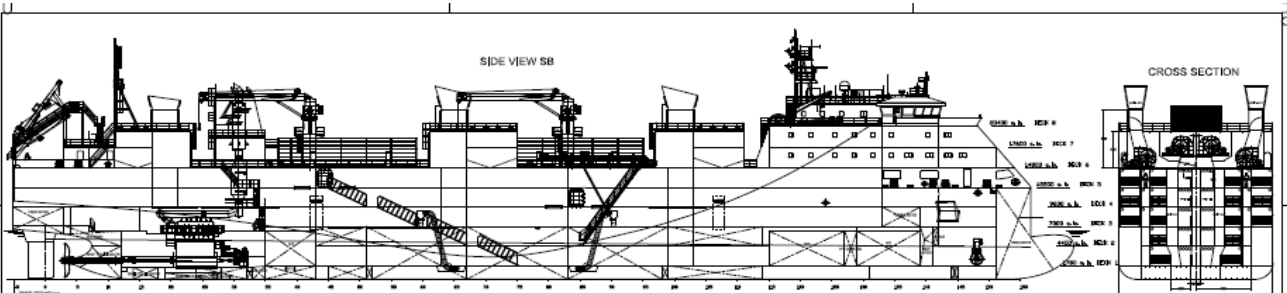


Livestock Express \* E chartering@livestock-express.com \* W www.livestock-express.com

## Livestock Vessel Galloway Express

|  |                                |  |                    |
|--|--------------------------------|--|--------------------|
| <b>Flag</b> : Singapore<br><b>Port of Registry</b> : Singapore<br><b>Built</b> : 2013<br><b>IMO N°</b> : 9621194<br><b>Class</b> : Rina<br><b>Builder</b> : China, Cosco Guangdong<br><b>Class notation</b> : C ⓧ livestock carrier; unrestricted navigation<br>ⓧ AUT-UMS; COMF-NOISE-B; COMF-VIB-B;<br>GREEN STAR 3 DESIGN; INWATERSURVEY;<br>MON-SHAFT | <b>Dimensions</b>              |  |                    |
|  | LOA                            | : 134.80 m   |                    |
|  | Length between pp              | : 125.25 m   |                    |
|  | Beam moulded                   | : 19.60 m  |                    |
|  | Depth                          | : 14.80 m  |                    |
|  | Summer draft                   | : 6.80 m   |                    |
| <b>Machinery</b>   |                                | <b>Tonnages</b>  |                    |
| Main Engine  | : 6,090 kW Wartsila W7X35      | DWT  | : 5,224.86 T       |
| Shaft generator  | : 1,050 kW                     | Scantling draft  | : 6.80 m           |
| Aux Engines  | : 3 x 1,100 kW                 | Design draft   | : 5.80 m           |
| 2nd source of power  | : 465 kW                       | Gross Tonnage  | : 10,421           |
| Bow Thruster   | : 750 kW                       | Net Tonnage  | : 3,126            |
| <b>Remarks</b>   |                                | <b>Speed / Consumption</b>   |                    |
| Gear : 2 x 3 T deck cranes @ 24 m<br>Air circulation: 90 air changes per hour (200 PAT)  |                                | Max sea speed: 18 knots<br>Service speed: abt 16.75 knots<br>(shaft generator engaged) |                    |
| <b>Capacities / Distribution</b>   |                                |  |                    |
| Total Gross Pen area:  | 4,499 m <sup>2</sup>           | HFO  | 954 m <sup>3</sup> |
| Total Gross Sheep Pen area (only deck 5):  | 891 m <sup>2</sup>             | MGO  | 196 m <sup>3</sup> |
| Number of decks:   | 5                              | MDO  | 168 m <sup>3</sup> |
| Deck space fodder:   | 495 m <sup>2</sup>             |  |                    |
| Fodder (silo):   | 1,200 m <sup>3</sup>           |  |                    |
| Fresh water:   | 2,646 m <sup>3</sup>           |  |                    |
| Fresh water production:  | 2 x 100 m <sup>3</sup> per day |  |                    |

Livestock Express \* E chartering@livestock-express.com \* W www.livestock-express.com



**Main Particulars:**

|                      |            |
|----------------------|------------|
| Length o.a.          | 124,900 #  |
| Length p.p.t         | 105,000 #  |
| Beam o.a.            | 24,000 #   |
| Depth (moulded)      | 6,000 #    |
| Depth to upper deck  | 24,000 #   |
| Displacement         | 6,000 #    |
| Deadweight           | 3000 t     |
| Break bulk capacity  | 8000 CB    |
| Ballast capacity STD | 800 CB     |
| Ballast capacity ISO | 100 CB     |
| Ballast capacity ID  | 100 CB     |
| Crane area sq.m.     | 4000 sq.m. |
| IMO number           | 9100101    |
| Loadline number      | 12,10      |
| Loadline year        | 1998       |

|          |                          |       |        |
|----------|--------------------------|-------|--------|
| Scale    | 1:1000                   | Sheet | 1/1    |
| Author   | GENERAL ARRANGEMENT PLAN | Scale | 1:1000 |
| Editor   | GENERAL ARRANGEMENT PLAN | Scale | 1:1000 |
| Checker  | GENERAL ARRANGEMENT PLAN | Scale | 1:1000 |
| Reviewer | GENERAL ARRANGEMENT PLAN | Scale | 1:1000 |
| Approver | GENERAL ARRANGEMENT PLAN | Scale | 1:1000 |
| Issue    | GENERAL ARRANGEMENT PLAN | Scale | 1:1000 |
| Revision | GENERAL ARRANGEMENT PLAN | Scale | 1:1000 |