



Leaders in Safety



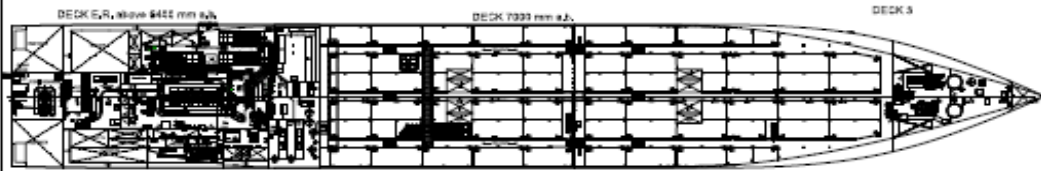
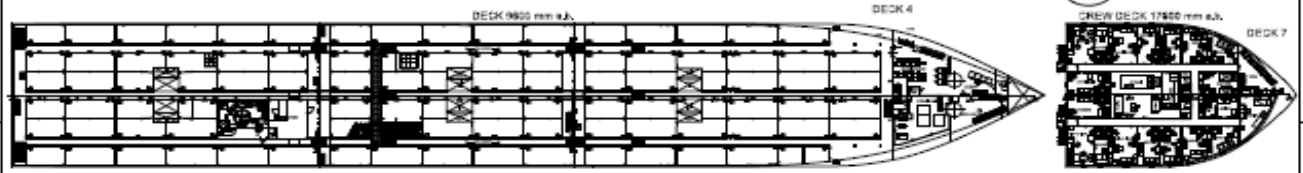
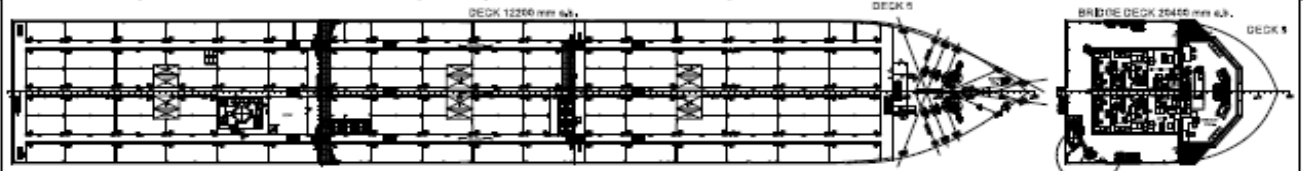
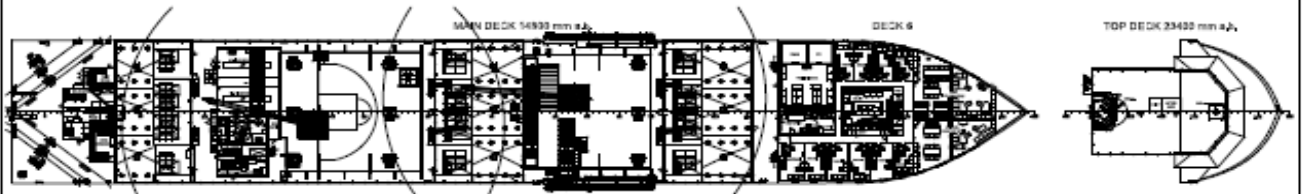
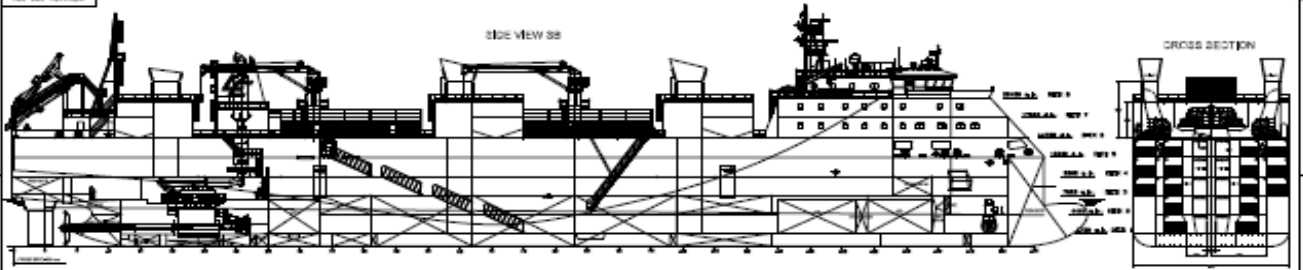
Livestock Express \* E chartering@livestock-express.com \* W www.livestock-express.com

## Livestock Vessel Greyman Express

<b>Flag</b> : Singapore <b>Port of Registry</b> : Singapore <b>Built</b> : 2016 <b>IMO N°</b> : 9733777 <b>Class</b> : Rina <b>Builder</b> : China Cosco, Guangdong <b>Class notation</b> : C ⓧ livestock carrier; unrestricted navigation ⓧ AUT-UMS; COMF-NOISE-B; COMF-VIB-B; GREEN STAR 3 DESIGN; INWATERSURVEY; MON-SHAFT	<b>Dimensions</b> LOA : 134.80 m Length between pp : 125.25 m Beam moulded : 19.60 m Depth : 14.80 m Summer draft : 6.80 m
<b>Machinery</b>	<b>Tonnages</b>
Main Engine : 6,090 kW Wartsila W7X35 Shaft generator : 1,050 kW Aux Engines : 3 x 1,100 kW 2nd source of power : 465 kW Bow Thruster : 750 kW	DWT : 5,225 T Scantling draft : 6.80 m Design draft : 5.80 m Gross Tonnage : 10,421 Net Tonnage : 3,126
<b>Remarks</b>	<b>Speed / Consumption</b>
Gear : 2 x 3 T deck cranes @ 24 m Air circulation: 90 air changes per hour (200 PAT)	Max sea speed: 18 knots Service speed: abt 16.75 knots (shaft generator engaged)
<b>Capacities</b>	
Total Gross Pen area: 4,622 m <sup>2</sup> Number of decks: 5 Deck space fodder: 495 m <sup>2</sup> Fodder (silo): 1,200 m <sup>3</sup> Fresh water: 2,694 m <sup>3</sup> Fresh water production: 2 x 100 m <sup>3</sup> per day	HFO 1,125 m <sup>3</sup> MGO 102 m <sup>3</sup> MDO 90 m <sup>3</sup>

Livestock Express \* E chartering@livestock-express.com \* W www.livestock-express.com

18787-ARR-10



**Main Particulars:**

Length o.s.l.	228,350 m
Length p.p.l.	220,000 m
Breadth p.d.	32,000 m
Depth (moulded)	12,500 m
Depth to upper deck	12,000 m
Height (upper deck)	12,000 m
Deck height	Approx. 1200 m
Free hold capacity	2500 mt
Ballast capacity (SW)	1200 m <sup>3</sup> oil
Ballast capacity (FW)	30,7 m <sup>3</sup>
Ballast capacity (SW)	100 mt
Capacity (SW)	Approx. 6000 mt
Ballast capacity (SW)	1200 m <sup>3</sup> oil
Load capacity (SW)	25,70 mt

Code	Symbol	Description	Unit	Value
1		Overall length (p.p.l.)	m	220,000
2		Overall length (o.s.l.)	m	228,350
3		Breadth (p.d.)	m	32,000
4		Depth (moulded)	m	12,500
5		Depth to upper deck	m	12,000
6		Height (upper deck)	m	12,000
7		Deck height	m	Approx. 1200
8		Free hold capacity	mt	2500
9		Ballast capacity (SW)	m <sup>3</sup> oil	1200
10		Ballast capacity (FW)	m <sup>3</sup>	30,7
11		Ballast capacity (SW)	mt	100
12		Capacity (SW)	mt	Approx. 6000
13		Ballast capacity (SW)	m <sup>3</sup> oil	1200
14		Load capacity (SW)	mt	25,70